



BAILLIE LODGES

---

AUSTRALIAN LUXURY DEFINED





Baillie Lodges is a dynamic portfolio of luxury lodges created by the partnership of James and Hayley Baillie, setting new benchmarks for premium experiential travel in unique Australian style.



Hayley and I created Baillie Lodges in 2003, inspired by a shared love for travel and for exploring the world, a taste for fine, local dining, and an appreciation of modern architecture and interior design. Essentially, we wanted to create standout luxury lodges in Australia's most extraordinary destinations.

We're fortunate to have created a working lifestyle doing what we love: travelling for work as well as for pleasure is an ideal combination. We work well together and have complementary skills and interests, and with four active sons we hope to be able to show them what the world has to offer.

It's our pleasure to introduce the trio of remarkable lodges that make up the Baillie Lodges portfolio: Capella Lodge on Lord Howe Island, Southern Ocean Lodge on Kangaroo Island and Longitude 131° at Uluru-Kata Tjuta.

To stay with Baillie Lodges is to experience destinations of unique natural and cultural significance, contemporary architectural design which welcomes the outside in, world-class local dining and beverages and first-name service. The overall sense is one of generous hospitality, of easy, relaxed luxury and of seemingly effortless attention to detail.

Each lodge is a founding member of the Luxury Lodges of Australia collection. Baillie Lodges offers guests an unforgettable experience of Australia, a celebration of its natural wonders and a generous welcome home.

We look forward to seeing you soon -

*James & Hayley*





# Our luxury

The Baillie Lodges experience embraces the luxury of travel. Together the properties are timeless in design, with myriad thoughtful details combining to create a feeling of genuine warmth and generous welcome.

It's a wholly sensory experience, a union of sights, scents and tastes that immerse guests in their surrounds. Considered architectural design creates an easy connection with the indoors and out. It's a journey within the destination, a real sense of place.

Each lodge offers a gateway to its extraordinary natural location, from a personal experience of its culture and history, its regional art and natural heritage, as well as a sharing of local food and wine sourced from local producers.

Guest itineraries are tailor-made, creating a personal, lasting connection with the destination. A stay with Baillie Lodges offers time to reconnect with the people and places that matter most.





# Coastal glamour

Southern Ocean Lodge is Australia's most extraordinary luxury lodge, offering a unique and exclusive Kangaroo Island experience.

A hop off the South Australian coast and graced with sweeping horizons of pristine wilderness, Kangaroo Island is treasured as Australia's Galapagos. Kangaroos, koalas, seals, dolphins and whales frolic to everyone's delight in this 'zoo without fences'.

An inspiring wild landscape is also home to artists, providores and producers, and is rich in maritime tales of the untamed Southern Ocean. The island's south-west coast is spectacularly isolated, offering a breathtaking silence, a rare moment of glorious solitude.



SOUTHERN  
OCEAN LODGE

KANGAROO ISLAND





‘Southern Ocean Lodge is all about getting lost in the wilds without sacrificing one iota of comfort’.

*Tatler*



# Natural habitat

Sensitively designed to blend seamlessly with Kangaroo Island's wildly beautiful landscape, Southern Ocean Lodge appears to float along its secluded clifftop setting.

The expansive Great Room lies at the helm, forming the hub of the lodging experience. Floor to ceiling windows extend panoramic views of white-sanded beaches and never-ending wilderness with the wild Southern Ocean thundering below. Guests dine in the restaurant, lounge with a book and a drink or plan a great day ahead. A commitment to sustainability is evident throughout, while local limestone walls, recycled timbers and custom furnishings afford guests a luxurious and exclusive retreat, Kangaroo Island style.



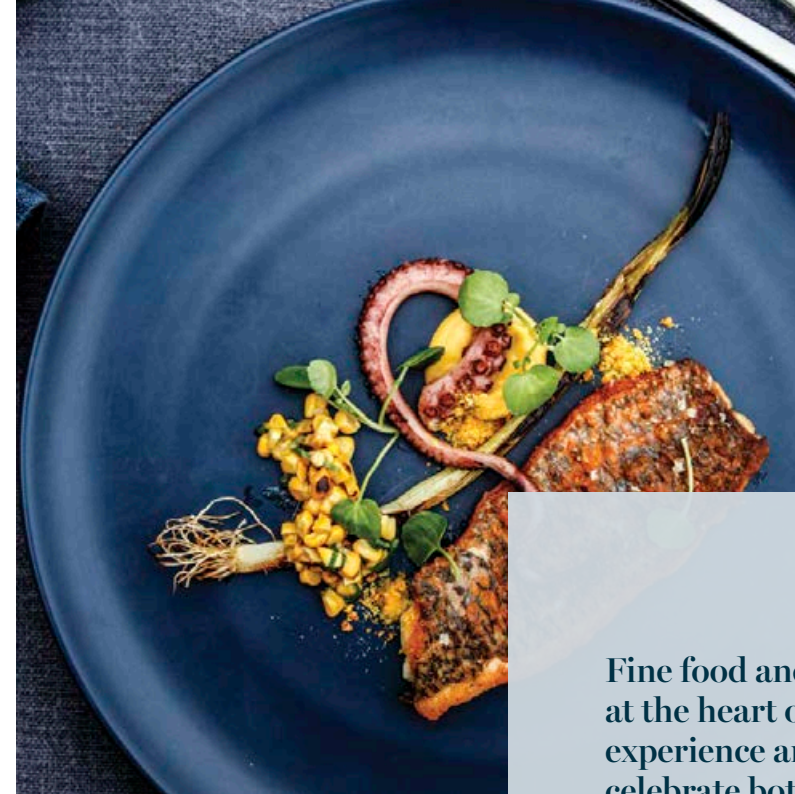




# Keeping it local

Kangaroo Island is renowned as South Australia's favourite food destination, with local growers producing a swag of premium produce. Dining at Southern Ocean Lodge is refined and organic, designed to reflect the natural surrounds.

Southern Ocean Lodge chefs work closely with the island's producers to source ingredients for its daily-designed menus. The lodge acts as providore for Kangaroo Island's producers, offering a guests a regional menu including free range lamb, fresh seafood, native berries, Ligurian honey and sustainably produced marron. A generous 'at-home' feel flows throughout with a convivial open bar stocked with South Australian craft beers, premium wines and spirits. A walk-in cellar featuring exclusively South Australian wines, many available only at the cellar door, completes a local gastronomic adventure.



Fine food and wine are at the heart of the lodge experience and dishes celebrate both the season and the riches of the island and greater expanse of South Australia.







‘Kangaroo Island  
has come of age with  
your belief in it’.

*Maggie Beer,  
Australian Food Legend*



# Into the wild

Kangaroo Island’s vast landscape and endless horizons beg to be explored. A tailor-made itinerary of guided adventures offers guests a first-hand encounter of abundant wildlife roaming freely in its natural environment.

Guests wander amongst sea lions lolling in the dunes at Seal Bay, take a walk on the wild side at the Remarkable Rocks and witness kangaroos and wallabies emerging to graze the grasslands at dusk. Guests discover the fascinating history of Kangaroo Island, of wretched shipwrecks and stoic lighthouse keepers, of isolated, persevering landholders with few comforts save the stars in the clear night sky. Signature experiences include a Flinders Chase adventure and walks along the coastal clifftops whilst a range of bespoke adventures takes in a nocturnal wander, kayaking, guided hikes and private charters to discover the island’s diversity of local artists or food and wine producers.







# Beauty & bounty

The satellite Southern Spa is reached by a coastal boardwalk among native mallee, a peaceful journey away from the main lodge. With the oxygen-charged ocean pounding below, this intimate retreat appears to float above sheer limestone cliffs, offering views of the great sweep of southern sky stretching towards the imagined Antarctic.

A menu of signature spa treatments features the Australian-made Li'Tya spa care range and indigenous massage techniques and may be personally tailored to suit individual requests. The island's own natural beauty products including Ligurian honey, eucalyptus, mineral salts and lavender combine to create an essential Kangaroo Island spa experience. A steam room offers a chance to cleanse whilst the spa's open-air terrace offers the perfect lounging place to soak in the moment.



‘This place is intimately connected to the island and feels very Australian. Everything looks, smells and tastes like the land and sea.’

*Christine Middap,  
The Weekend Australian Magazine*







## Getting there

Kangaroo Island sits a mere 15km from the shores of mainland South Australia. As Australia's third largest, the island is 155km long by 55km wide.

Located at Hanson Bay on the island's south-west coast, Southern Ocean Lodge is a 50-minute drive from the airport or 90-minute drive from the ferry terminal. Regular 30-minute flights operate from Adelaide to Kangaroo Island Airport to be met for transfer to the lodge. On departure, guests are invited to relax in the lodge's exclusive airport lounge extending the experience almost to the run-way.

For self-drive island excursions, a 45-minute ferry service runs between Cape Jervis on the mainland and Penneshaw on Kangaroo Island. Cape Jervis is a picturesque two-hour drive from Adelaide.



# Southern style

Twenty-one contemporary suites cantilever along the curve of limestone cliffs, each with open views of the Southern Ocean and dramatic coastal wilderness.

It's a perfect place to spot whales breaching and dolphins surfing the waves, to catch sight of an Osprey in flight or to watch the sun rise from the comfort of a well-dressed king bed. Signature design elements and custom designed furnishings invite luxurious lounging while Kangaroo Island artists' works offer inspiration. An included in-suite bar offers a selection of South Australian treats just ideal for a snack between adventures. Guests bathe with a view to the Southern Ocean with floor to ceiling windows, warm limestone floors, generous rain-shower and exclusive spa range. A private outdoor terrace with daybed allows a step into the landscape.





# The last paradise

Refreshingly off the radar, Capella Lodge is Lord Howe Island's premium luxury retreat, offering the ultimate island castaway experience.

 CAPELLA LODGE  
LORD HOWE ISLAND

Lord Howe Island is a subtropical 'treasure island' preserved in time. An intoxicating blend of pristine beaches, rich pastures, lush rainforests and sheer volcanic peaks rising from the reef, Lord Howe is a sanctuary for rare plants, sea birds and marine life.

The crescent-shaped island cradles the world's southern-most coral reef, warmed by currents from the Coral Sea to the north and providing home to green sea turtles and a kaleidoscope of abundant coral and fish, perfect to discover by snorkel or glass bottom-boat. The island's many walking tracks scope mountains, beaches and rainforests, offering spectacular views at every turn.

Lord Howe has been a protected marine park for more than a century, and was inscribed on the UNESCO World Heritage List in 1982. Rising sharply more than 800m above sea level, Mounts Gower and Lidgbird stand at the island's helm, the assumed natural caretakers, often shrouded in clouds and with an other-worldly, magnetic pull drawing visitors in.

A fortunate few enjoy this island paradise; with a small number of residents and only four hundred visitors permitted at any one time, this precious ecology continues to thrive just as nature intended.





# Barefoot luxury

Celebrated as the most glamorous hideaway on Lord Howe Island, Capella Lodge rests above romantic Lovers Bay and at the foot of the towering Mounts Gower and Lidgbird, welcoming spectacular views of the ocean, subtropical reef and mountains.

A contemporary architectural design presents generous indoor-outdoor lounging areas and a light-filled, expansive bar and restaurant, with ceiling-high glass that opens beneath a dramatic skillion roof seeming to reach to the mountain peaks beyond. Outside, Gowers Terrace offers luxurious lounging with a view, ideal for relaxing or enjoying sunset drinks, while a horizon pool invites a languid dip. Inside, a feeling of relaxed sophistication flows throughout. Beach house style furnishings and custom fabrics complement island-inspired artworks and recycled wooden floors to create an easy ambience.

‘Capella ranks as one of Australia’s finest accommodations on one of the world’s most singularly spectacular and remarkable islands.’

*Anthony Dennis,  
Fairfax Traveller*







# A natural selection

Dining at Capella Lodge is a celebration of fine local produce with an abundance of fresh line-caught fish, island-grown greens and foraged coastal herbs.

The restaurant opens to spectacular views of the lagoon and mountains, offering an idyllic backdrop for dining at every occasion throughout the day. Outdoors, the simple pleasure of a long and lazy barbecue lunch is a favourite Lord Howe tradition, with optional fish feeding, snorkelling or a quick dip. Fresh, produce-driven menus change daily to showcase locally sourced and often organic ingredients accompanied by lodge-made specialities. Sunset drinks and canapés at the evening's open bar cap off the day as the sun slips below the horizon and segue easily to dinner. A generous selection of premium wines includes hand-chosen labels from Australia's finest wineries to complement the fresh island flavours.



Cuisine at Capella Lodge is designed to promote the pure taste of superb local and regional produce. A surprising harvest springs from this tiny, pristine island blessed with rich soils, bountiful waters and from Capella's own kitchen garden.





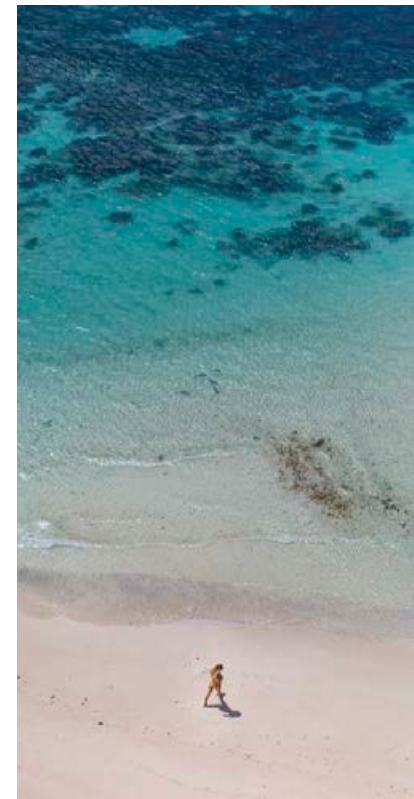
Sir David Attenborough  
once wrote that Lord Howe  
is ‘so extraordinary it is  
almost unbelievable...’



# Lord wow!

World Heritage-listed Lord Howe Island is a paradise of rainforests, reefs and beaches and is home to hundreds of rare and endemic species, meaning any visit to the island has the sense of a *National Geographic* expedition.

With Capella Lodge as one’s own basecamp, guests take to walking tracks to explore subtropical forests and white-sanded beaches, discover remote rocky coves alive with magnificent birdlife or valleys brimming with ancient plants. There are mountains to climb, including to the summit of Mount Gower, rated as one of the world’s best day walks. Below, the clear, warm waters of the lagoon are ablaze with the colour of corals as sea turtles and a riot of fish swim in submarine cities sheltered in the reef, while kingfish and tuna cruise beyond. Exploring this underwater world is as simple as taking fins and snorkel, a kayak or a glass-bottomed boat, or a scuba-dive for deeper inspection.







# Island hideaway

Inspired by the carefree spirit of the Australian beach house, Capella Lodge has nine contemporary, island-styled suites designed to reflect Lord Howe's pristine natural environment.

Guests are provided a private and relaxed retreat, with suites extending the easy feel of the main lodge with wooden floors, generous rugs and luxurious armchairs promising afternoons shared with a book, as wooden shutters direct a cool breeze. Spacious, light-filled interiors feature stylishly appointed king beds, custom furnishings and commissioned artworks that together create a feeling of relaxed, understated luxury.

Basalt stone ensuite bathrooms feature a rain-shower and signature spa amenities while a well-stocked in-suite bar offers a range of gourmet treats. Private decks with lounging areas - and many with plunge spas - take in views of ocean and mountains under the sway of Lord Howe's endemic Kentia palms, welcoming the outside in.



'Long attracting aspiring Crusoes to its tale-y sand beaches, Lord Howe Island is also home to what Australians (and some clued-in others) know to be one of the country's finest lodges: Capella.'

*Maria Shollenbarger,  
Financial Times*





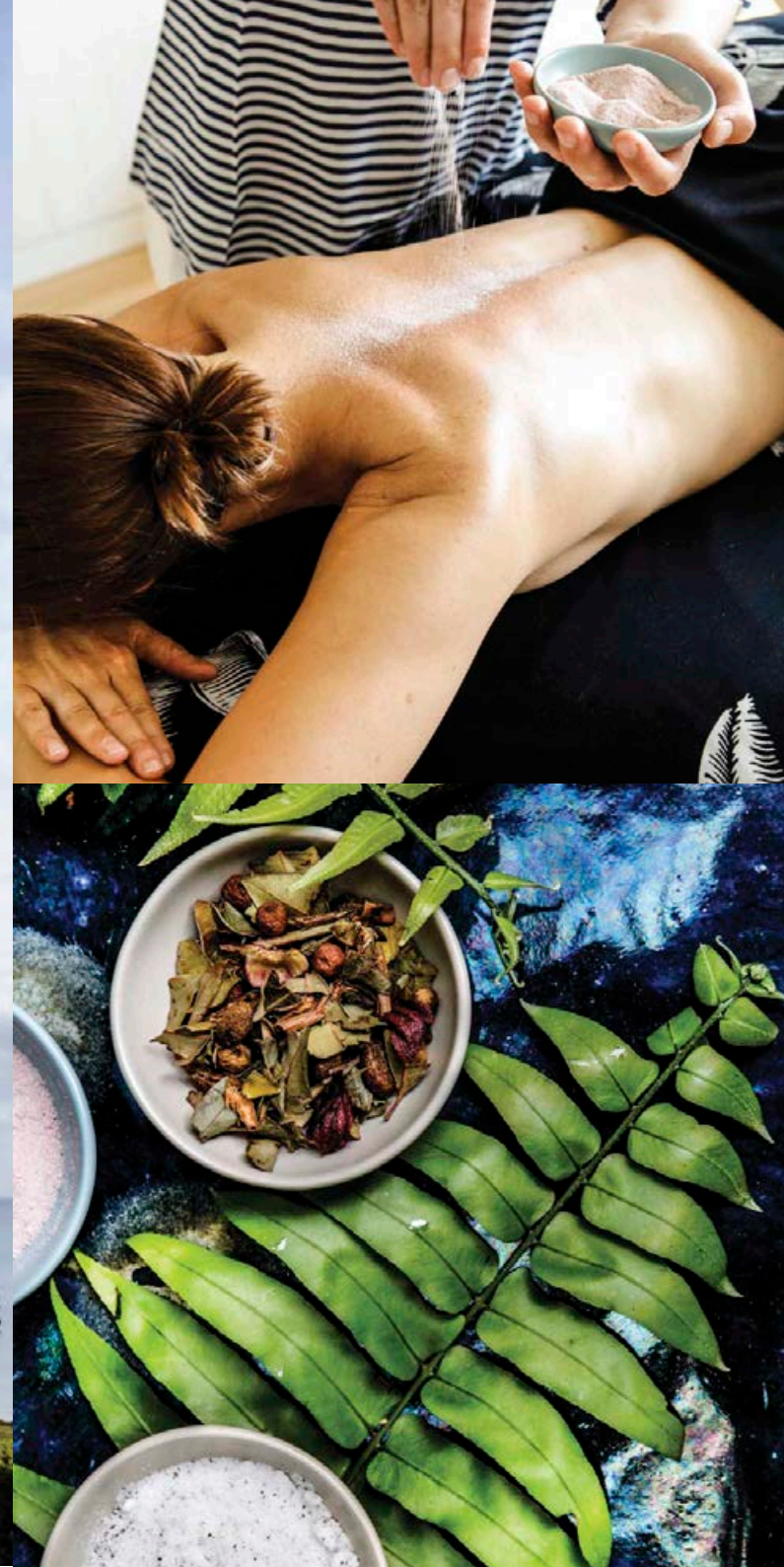
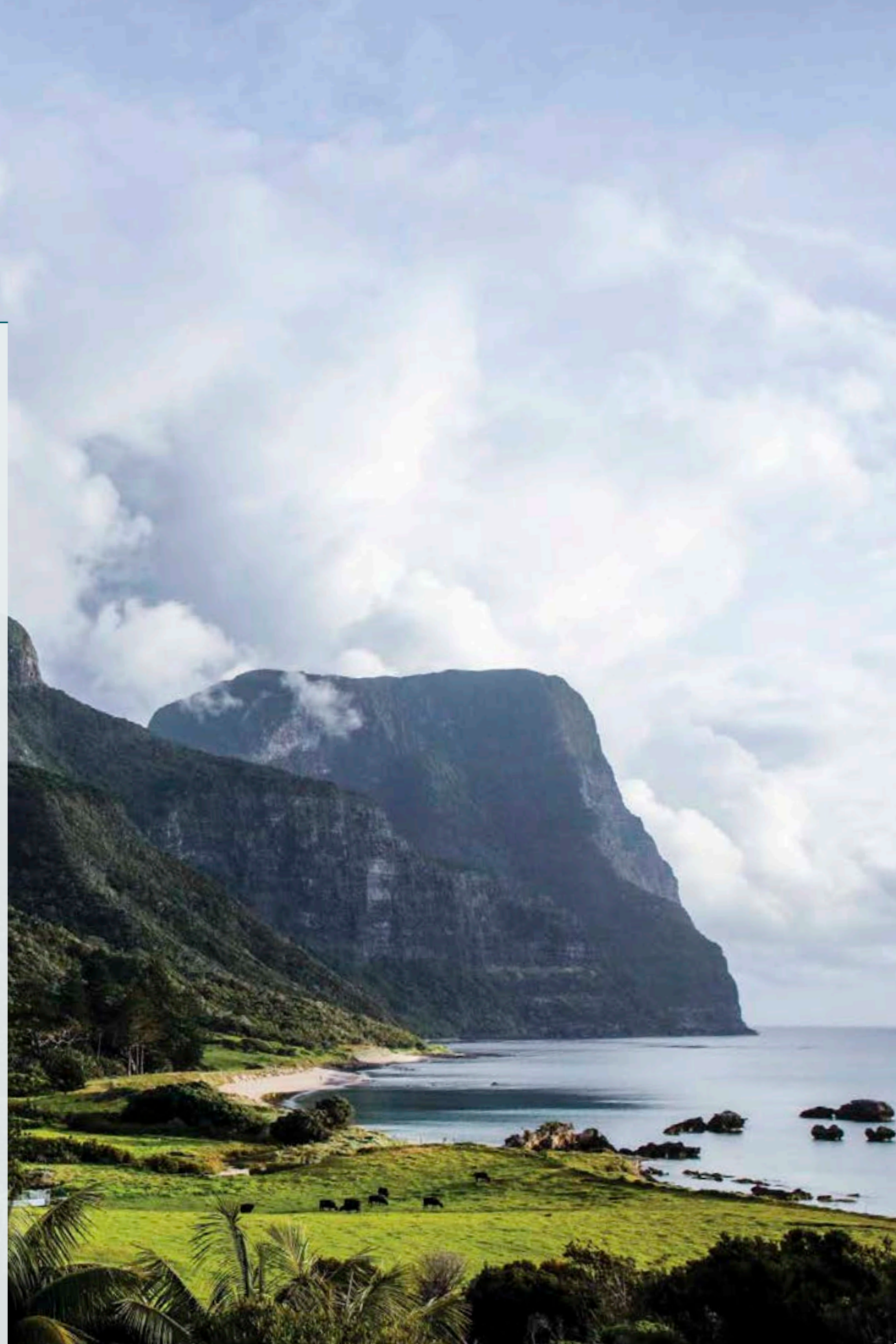
## Getting there

Lord Howe is situated in the Tasman Sea, 600km north-east of Sydney, Australia.

Access is exclusively via a short Qantas flight which departs daily from Sydney and provides a spectacular aerial welcome to the island sanctuary.

QantasLink operates 32-seat Dash 8 aircraft to Lord Howe Island. Flights are less than two hours from Sydney or Brisbane. A 14kg luggage limit per person applies on all Lord Howe Island flights.

Capella Lodge hosts meet all flights, welcoming and then farewelling guests from the airport's green lawn.



# Heaven sent

Relaxing into its lofty setting among the swaying Kentia palms, the Capella Spa encourages dreamy surrender to island-inspired treatments.

After all the action, unwind with an indulgent treatment and tap into the ancient practices of indigenous healers. A sacred stone massage uses the Li'Tya spa care range and draws upon the power of heated basalt stones gathered from the island's windward beaches. For tired and weary legs a post-hike feet treat soaks away tensions in both soul and soles. The spa's ultimate indulgence is a decadent face and body treatment complete with a pearl and kelp body wrap. Guests emerge from the Capella Spa more relaxed than ever, ready to soak in the pristine beauty of Lord Howe Island and embark on another day in paradise.



Treasured as Australia's spiritual heart, the World Heritage-listed Uluru-Kata Tjuta National Park is an ancient desert landscape renowned as the 'Red Centre' thanks to the rust-red earth which makes up the region's towering rock formations and flowing sand dunes.

Domed by a deep blue sky and spanning a vast expanse of the Northern Territory, the outback's rugged beauty is heightened by the living presence of one of the world's largest monoliths, Uluru (Ayers Rock) and the sacred red domes of Kata Tjuta (The Olgas) which stand nearby.

It's a land of stark contrasts, home to the world's oldest living culture, the indigenous Australians, while also revealing a more modern history with the folklore of the early western explorers. A visit to Uluru-Kata Tjuta is an experience of culture, heritage and connection with this splendidly isolated land.

# Rock star

Longitude 131°, the luxury desert basecamp at Uluru-Kata Tjuta, offers an essential experience of Australia's spirited heartland in Baillie Lodges' exclusive style.







‘The footprint is light on the earth, the lodge is hunkered low, there is nothing between you and the 600 million-year-old Uluru except red, raw landscape.’

*Susan Kurosawa,  
The Australian*



# Outback frontier

Nestled atop rust-red dunes, Longitude 131° overlooks Australia’s best-known natural icon, Uluru.

The welcome open spaces of the central Dune House include a restaurant and bar with ever-changing views of the monolith as a backdrop for dining as well as lounging areas in contemporary campaign style, ideal for relaxing with an icy drink and exchanging stories of the day’s adventures in the outback.

Vibrant artworks and ceramics from local indigenous artists complement Australian-designed custom furnishings. Glass doors open onto a timeless desert landscape, affording guests an easy encounter with the outdoors. Up on the Dune Top, guests drink in the views in between plunge pool dips by day and enjoy sundowners as the evening light falls on Uluru and Kata Tjuta.





# An Australian flavour

Located at the heart of Australia, Longitude 131° offers a dining experience that represents the very best ingredients from around the nation, brought together in one menu.

Guests enjoy the flavours and textures of the bush on the menu, with desert-foraged herbs, finger limes, muntrie berries, quandongs and Davidson plums creating a uniquely local dining experience.

The Dune House, with its panoramic views and soaring canopy, is the central hub of Longitude 131°, where guests dine and relax. The feel-at-home open bar is available throughout the day, generously stocked with a 'top shelf' selection of Australian wines and beers, as well as premium spirits. Sunset drinks and canapés are enjoyed in the cool of the evening either on the Dune Top at Longitude 131° or at the foot of Uluru, allowing guests a view of the changing lights reflected on its many faces as the sun slips below the horizon. Dinner at Table 131° is one of life's most memorable, as the theatre is transported to a remote setting among the dunes and guests settle in for intimate campfire-side dining under a glittering canopy of stars.



Guests at Longitude 131°  
dine with a view to Uluru  
whilst enjoying  
contemporary cuisine  
curated from the finest  
produce from all around the  
country, combined with  
indigenous flavours to create  
a unique taste of Australia.





‘Such is a stay at Longitude 131°: soul-touching experiences bookended by luxury indulgences.’

*Kirsten Rowlingson,  
Virgin Australia Voyeur*



# Luxury icon

Guests at Longitude 131° adopt the spirit of the original outback pioneers and relax in luxury tents after a day’s exploring.

Custom furniture from contemporary Australian designers offers stylish lounging, whilst the bespoke ‘Baillie Bed’ dressed in organic linens holds centre stage. Unparalleled views of Uluru play out from the end of the bed, or on the balcony from the warmth of a luxury swag unfurled in the cool night air. The bright textures of local indigenous artworks provide a colourful contrast to artefacts of the western pioneers. A spacious bathroom and well-stocked in-tent bar dispel any lingering sense of roughing it.

Designed to offer the ultimate in outback glamour, the premium Dune Pavilion is Australia’s only accommodation to offer views of both Uluru and Kata Tjuta.







# A spirited encounter

With Longitude 131° as luxury basecamp, guests can explore the cultural and natural landscape of World Heritage-listed Uluru-Kata Tjuta National Park. Longitude 131° operates a signature itinerary of personally guided experiences of Uluru and Kata Tjuta allowing guests an encounter with the Red Centre's iconic natural attractions.

Guides at Longitude 131° have an extensive knowledge of the geology and ecology of this ancient land and an introduction to the traditional Anangu *Tjukurpa*, which is the foundation of the indigenous community's life and society. These stories, shared along each of the tours add a personal education of the local landscape and culture to the experience.

Days take on an intrepid safari rhythm: guests rise early to walk among the mighty domes of Kata Tjuta or discover the ancient secrets of Mititjulu Waterhole at Uluru. Back at the Dune House, guests refuel over a laid-back lunch and in the cool of the evening, revel in the sunset or dine under the stars at Table 131°.



'My sense is just being near this mystical rock lights a spark inside you.'

*Ron Gluckman, Travel + Leisure*







## Getting there

Longitude 131° overlooks Uluru-Kata Tjuta National Park in the heart of the Northern Territory.

Only three hours' travel by air from most Australian capital cities, daily direct flights are available from Sydney, Cairns and Alice Springs to Ayers Rock Airport; direct flights from Melbourne, Adelaide, Brisbane and Darwin operate on selected days.

Alternatively, flights from Sydney, Brisbane and Melbourne connect via Alice Springs and onto Ayers Rock Airport.

Longitude 131° operates complimentary luxury vehicle transfers connecting with all Ayers Rock Airport flights.

**'Spa Kinara is the perfect antidote to walking weariness.'**

*Leigh-Ann Pow,  
Australian Traveller*



# Red Centre safari

Guests looking to explore more of the outback, or who have a special interest to pursue, can choose from a selection of bespoke experiences in addition to their signature Longitude 131° itinerary.

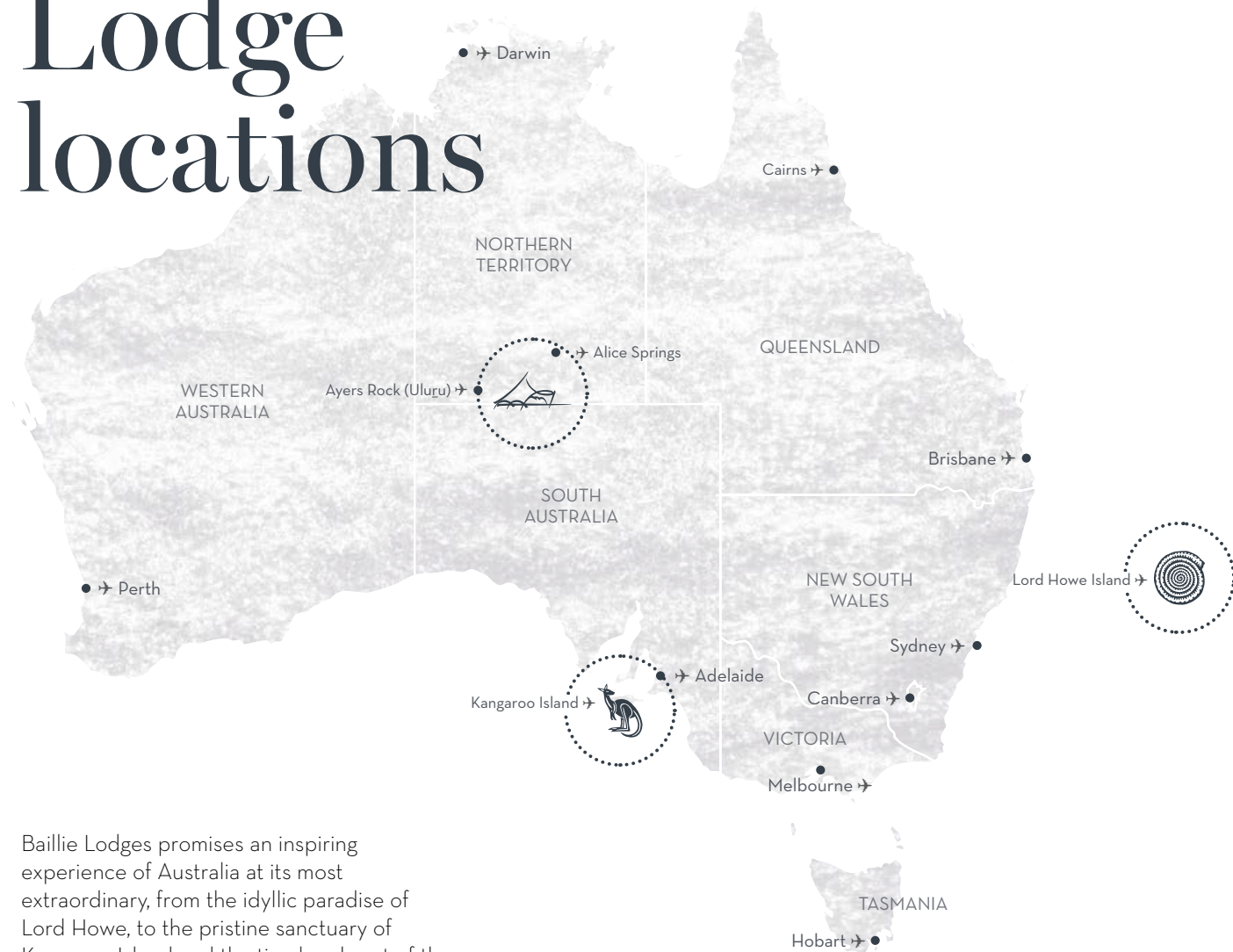
Activities may be relaxed, like romantic private dining, or more energetic including the Uluru base walk and rewarding Valley of the Winds hike at Kata Tjuta. Longitude 131° also partners with specialist adventure operators for tours, including scenic heli flights for an exhilarating aerial perspective of the outback regarded as a 'must do' by those in the know. Adventure seekers can jump on a camel or a Harley-Davidson for an unforgettable ride around Uluru.

After busy days in the desert, Spa Kinara (meaning 'moon') at Longitude 131° offers travellers a welcome reward. Signature treatments feature the Australian-made Li'Tya spa care range complemented with locally sourced native botanicals. Inspired by the design of a traditional indigenous shelter, Spa Kinara invites guests to experience a deep feeling of well-being and of being grounded in the landscape.





# Lodge locations



Baillie Lodges promises an inspiring experience of Australia at its most extraordinary, from the idyllic paradise of Lord Howe, to the pristine sanctuary of Kangaroo Island and the timeless heart of the 'Red Centre'. Capturing the essence of this remarkable land, each destination is easily accessed by daily flights from major ports.





Capella Lodge  
LORD HOWE ISLAND

Longitude 131°  
ULURU-KATA TJUTA

Southern Ocean Lodge  
KANGAROO ISLAND



61 2 9918 4355  
[reserve@baillielodges.com.au](mailto:reserve@baillielodges.com.au)  
[baillielodges.com.au](http://baillielodges.com.au)